



903.675.9062

athenagardenapts@gmail.com

# Athena Garden is Convenient to Downtown

## Community Amenities

- Sparkling Swimming Pool
- On-Site Clothes Care Center
- On-Site Parking
- Townhome
- 24-Hour Emergency Maintenance
- Picnic Area
- Professionally Landscaped Grounds
- Accepts On-Line Payments
- We are a PET-FRIENDLY Community\*\*

\*In select units

\*\*Restrictions may apply

## Apartment Features

- Patio/Balcony
- Fireplace\*
- Dishwasher
- Disposal
- Heating/Air Conditioning
- Range/Oven
- Refrigerator
- Ceiling Fans
- Plank Flooring\*
- Plush Carpet\*
- Cable/Internet Ready
- Window Coverings
- Studio, 1 and 2 Bedroom Floor Plans
- Walk-In Closets
- Washer/Dryer Connections\*
- Tub/Shower

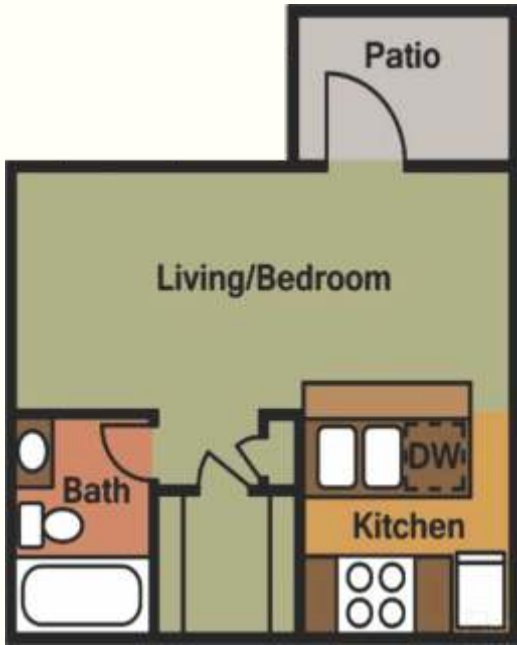
**Now Leasing 1, and 2 Bedroom Apartment Homes**

Professionally Managed by



# Athena Garden Apartments

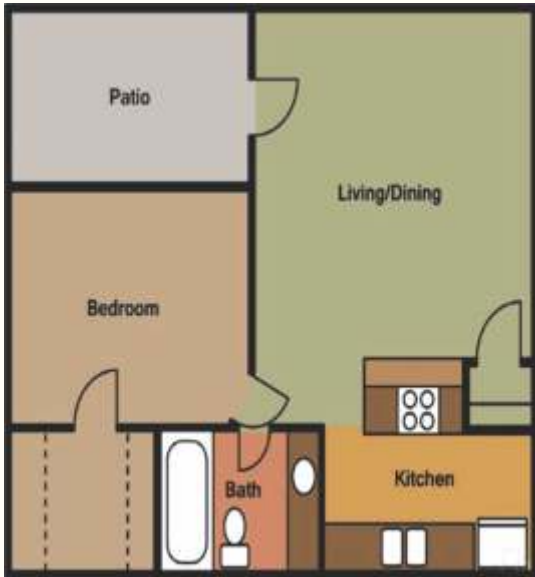
1 BED/1 BATH 660 Sq. Ft.\*



1BED/1 BATH Studio 442 Sq. Ft.\*



2 BED/1.5 BATH 840Sq.



1 BED/1 BATH 544 Sq. Ft.\*

2 BED/2.5 BATH 1,093 Sq. Ft.\*



\*Approximate Square Footage Only.